



RIGHT-HIRE

Assessment Precision in Hiring and
Talent Management

Personal Competencies Assessment

Prepared for:

Demo Sample

- *This material is confidential and personal.*
- *Please do not read this report unless authorized to do so.*
- *The content should not be used as the sole source for decisions regarding hiring, placement, career moves or termination.*

San Jose, California
Voice: 408.834.7768 ext.1
Fax: 408.448.1828
E-Mail: mcarlisle@right-hire.com
Web: <http://www.right-hire.com>

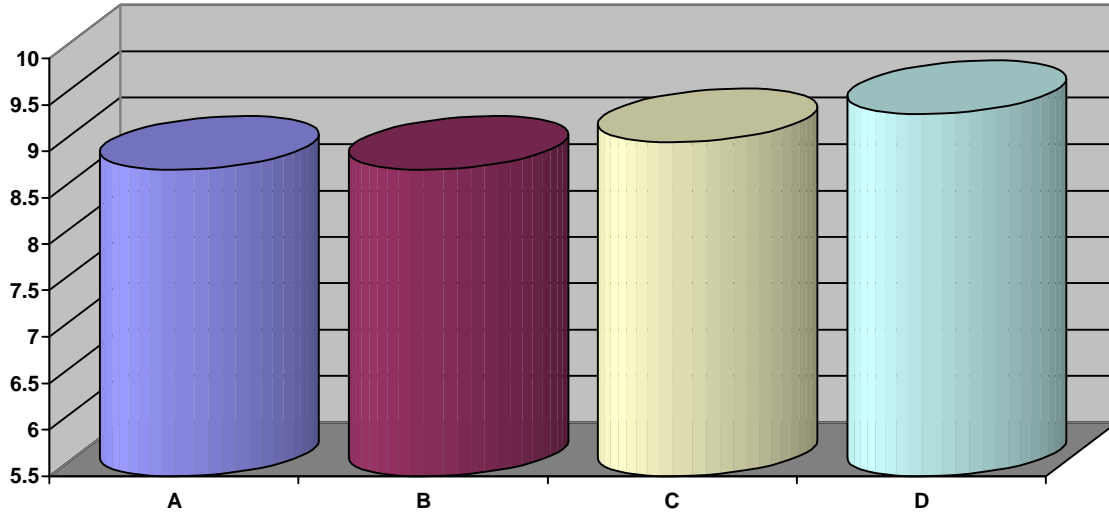
7/12/2007 6:54:00 PM
77CI_8015

This entire document is subject to the following statement:

Copyright © 2005- 2007 – Axiometrics International, Inc. and Workforce Solutions, Inc. All rights reserved.

Personal Competencies Assessment

GLOBAL GRAPH



Low Risk (Excellent ability to utilize the capacity and translate the talent into decisions; reduces the potential for errors and mistakes)	8.8 to 10.0
Situational Risk (Very good ability to utilize the capacity especially in well defined areas; however, there are specific situations that can interfere with the translation into decisions)	8.5 to 8.79
Conditional Risk (Limited access to the capacity indicating actual conditions that will increase the potential for mistakes and errors and restrict the transfer into decisions)	8.2 to 8.49
Real Risk (Restricted access to the capacity indicating the ability is consistently unavailable and individuals are subject to mistakes and errors in judgment)	6.0 to 8.19

A) PEOPLE (Low Risk) — This section measures the ability to make sound and objective decisions about others and to build relationships.

B) TASK (Low Risk) — This section measures the ability to see and understand what is happening in a practical, concrete manner.

C) SYSTEM (Low Risk) — This section measures the ability to see, understand and appreciate planning, strategic thinking and issues, conceptual organizing and consistency and conformity.

D) SELF (Low Risk) — This capacity measures the ability to see, understand and be sensitive to personal uniqueness, confidence and competency and goals and self organization.

Personal Competencies Assessment

TOP TEN CRITICAL SUCCESS COMPETENCIES

Listed below are your top ten Critical Success Competencies. These competencies are listed in order of the talent you currently display for paying attention to and valuing them. The first competency listed is your strongest, which is then followed by the rank order of the remainder of the competencies.

Rank	Description	Strength/Development
1	Is optimistic and believes that the best can and will happen.(SE)	Low Risk
2	Is sensitive to needs, concerns, and attitudes of others.(PEO)	Low Risk
3	Treats others fairly.(PEO)	Low Risk
4	Willing to listen to others.(PEO)	Low Risk
5	Gives advice without being critical.(PEO)	Low Risk
6	Seeks help from others to improve themselves.(SE)	Low Risk
7	Is willing to make mistakes and learn from them.(SE)	Low Risk
8	Makes decisions with confidence.(SE)	Low Risk
9	Keeps word and personal commitments.(PEO)	Low Risk
10	Sticks by a decision once it is made.(SE)	Low Risk

PEO = PEOPLE COMPETENCIES	TSK = TASKS COMPETENCIES	SYS = SYSTEM COMPETENCIES	SE = SELF COMPETENCIES
--------------------------------------	-------------------------------------	--------------------------------------	-----------------------------------

Personal Competencies Assessment **THREE KEY DEVELOPMENT AREAS**

Listed below are your three key development areas from the Critical Success Competencies. These competencies are listed in order of the area which needs the most development followed by the other two in the order of their rank.

Rank	Description	Strength/Development
1	May become confused and frustrated when things do not work out.(SYS)	Real Risk
2	Does not always communicate a sense of vision and purpose.(SE)	Real Risk
3	Does not always respond quickly to immediate problems.(TSK)	Real Risk

PEO = PEOPLE COMPETENCIES	TSK = TASKS COMPETENCIES	SYS = SYSTEM COMPETENCIES	SE = SELF COMPETENCIES
--------------------------------------	-------------------------------------	--------------------------------------	-----------------------------------

Personal Competencies Assessment

PEOPLE SUCCESS COMPETENCIES

Listed below are the Critical People Success Competencies. These competencies are listed by the order of the talent you display for paying attention to and valuing them. The first talent is your strongest, followed by the rank order of the remainder of the competencies.

Rank	Description	Strength/Development
1	Is sensitive to needs, concerns, and attitudes of others.	Low Risk
2	Treats others fairly.	Low Risk
3	Willing to listen to others.	Low Risk
4	Gives advice without being critical.	Low Risk
5	Keeps word and personal commitments.	Low Risk
6	Deals with conflicting issues in a positive responsible manner.	Low Risk
7	Is open to the ideas and opinions of others.	Low Risk
8	Makes an effort to be pleasant, courteous and tactful.	Low Risk
9	Addresses issues clearly and directly.	Low Risk
10	Knows what to say and how to say it.	Situational Risk

Personal Competencies Assessment

TASK SUCCESS COMPETENCIES

Listed below are the Critical Task Success Competencies. These competencies are listed by the order of the talent you display for paying attention to and valuing them. The first talent is your strongest, followed by the rank order of the remainder of the competencies.

Rank	Description	Strength/Development
1	Is willing to be creative and inventive.	Low Risk
2	Understands the difference between crisis issues and minor problems.	Low Risk
3	Knows what needs to be done and how to get things done.	Low Risk
4	Knows how to set priorities and take care of them.	Low Risk
5	Is willing to get things done.	Low Risk
6	Does not jump to conclusions to quickly solve problems.	Situational Risk
7	Evaluates problems from all perspectives.	Situational Risk
8	Pays attention to getting things done on time.	Situational Risk
9	Takes care of daily detail work.	Situational Risk
10	Responds quickly to immediate problems.	Real Risk

Personal Competencies Assessment **SYSTEM SUCCESS COMPETENCIES**

Listed below are the Critical System Success Competencies. These competencies are listed by the order of the talent you display for paying attention to and valuing them. The first talent is your strongest, followed by the rank order of the remainder of the competencies.

Rank	Description	Strength/Development
1	Sees to it that things are done right.	Low Risk
2	Pays attention to long range strategic issues.	Low Risk
3	Takes time to do analyze problems thoroughly.	Low Risk
4	Pays attention to what is needed to reach goals.	Low Risk
5	Pays attention to consequences of decisions.	Situational Risk
6	Pays attention to planning and organizing.	Situational Risk
7	Creates backup plans for situations when things do not work out.	Situational Risk
8	Pays attention to short range and long range issues.	Situational Risk
9	Takes the time to keep things organized.	Conditional Risk
10	Believes in and communicates a sense of meaning and purpose.	Real Risk

Personal Competencies Assessment

SELF SUCCESS COMPETENCIES

Listed below are the Critical Self Success Competencies. These competencies are listed by the order of the talent you display for paying attention to and valuing them. The first talent is your strongest, followed by the rank order of the remainder of the competencies.

Rank	Description	Strength/Development
1	Is optimistic and believes that the best can and will happen.	Low Risk
2	Seeks help from others to improve themselves.	Low Risk
3	Is willing to make mistakes and learn from them.	Low Risk
4	Makes decisions with confidence.	Low Risk
5	Sticks by a decision once it is made.	Low Risk
6	Makes and keeps realistic commitments.	Low Risk
7	Is willing to change directions when necessary.	Low Risk
8	Is willing to take risks for what they believe is right.	Low Risk
9	Knows how to set goals which are challenging and attainable.	Situational Risk
10	Believes in and communicates a sense of vision and purpose.	Real Risk